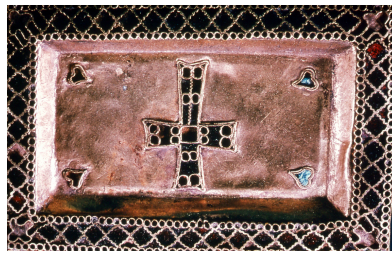


Medieval Archaeology Seminar

Hilary Term, 2018

Mondays, 3.00 in the Institute of Archaeology
Lecture Room



Week 2 (22 Jan) Sarah Mallet

Diets in Early Medieval Britain: what the isotope data tell us. A perspective from the EngLald project

Week 4 (5 Feb) Stuart Wrathmell & Simon Mays

The Walking Dead of Wharram Percy? Recent scientific analysis of human remains from the medieval settlement

Week 6 (19Feb) Matt Austin

Anglo-Saxon 'Great Hall Complexes': Elite Residences and Landscapes of Power in Early England, c. AD 550-700

Week 8 (5 March) Alex Johnson

Pictish and Viking Age burials on Orkney: An isotopic and osteological comparison

Convenors: L Ten Harkel / H Hamerow / J Kershaw